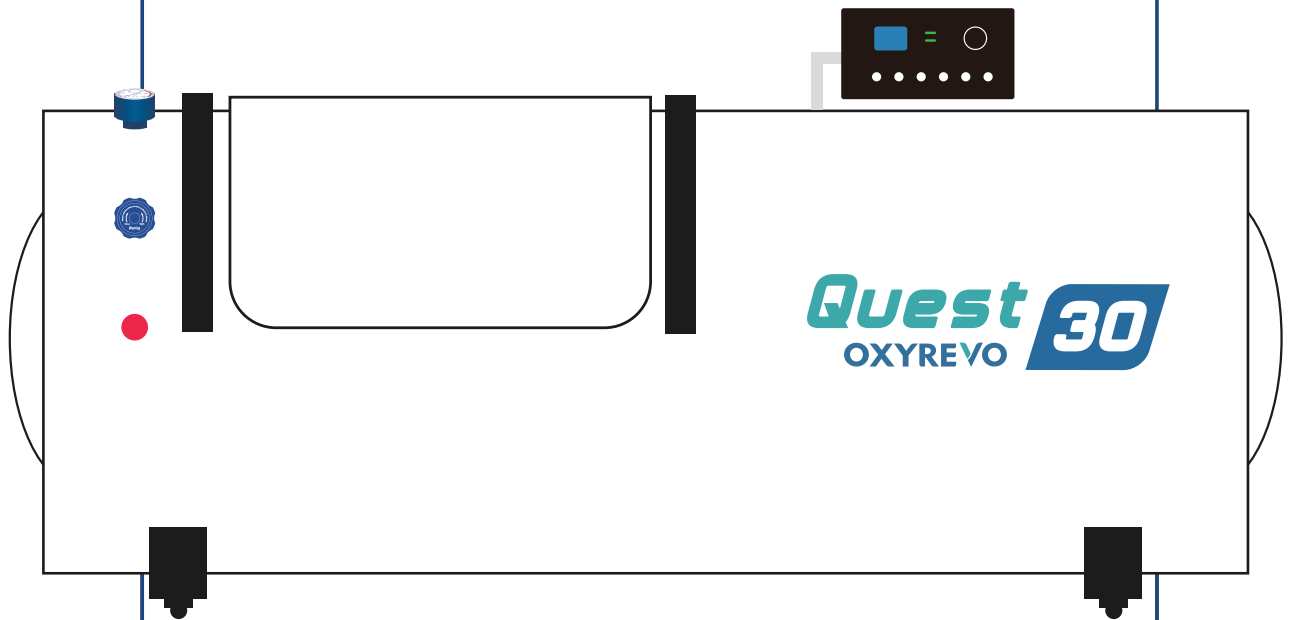


User Manual



OXYREVO

www.oxyrevo.com

Safety Notice

To ensure safety, please read the following precautions before using,

Warning:

- If abnormal smell during use, please turn off the power and pull out the plug
- Please make sure the socket plug is fully inserted
- Please do not disassemble the machine without permission from the supplier
- This product must not be exposed to water, fire, or sharp objects
- Child use under adult care only
- Please do not touch any valves on the chamber when in use
- Please do not place heavy objects on the machine
- Do not use if the power cord is loose
- Do not pull or twist the power cord
- Keep wet hands away from the unit
- Do not use it in a bathroom or other damp environment

Do not use under the following conditions:

- Pregnant women and people with severe infectious diseases
- Bad colds and Pneumothorax patients
- Patients with severe emphysema
- Hypertension exceeds 160/100ml
- Severe heart problems

*It is recommended to turn on your room air conditioner when your room temperature is above 20 °C for better comfortable cooling using experience .

Notice:

1. When the pressure is rising in the chamber, your ears may sense the pressure, similar to the feeling of taking a plane up and down.

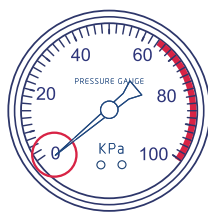
This is normal. The following methods can be used to relieve the pressure,

- a) Chewing gum.
 - b) Yawning.
 - c) Pinch nose and blow against a closed mouth until the pressure stabilizes.
- Any discomfort will gradually disappear.

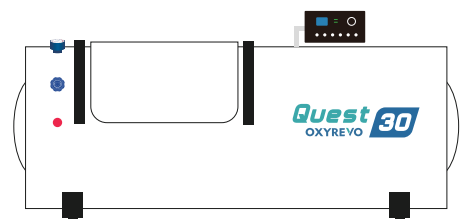
2. Door can be opened ONLY when the chamber has been depressurized to 0kPa.



Open the Valve



Make sure that Pressure Gauge appears 0 kPa



Open the door

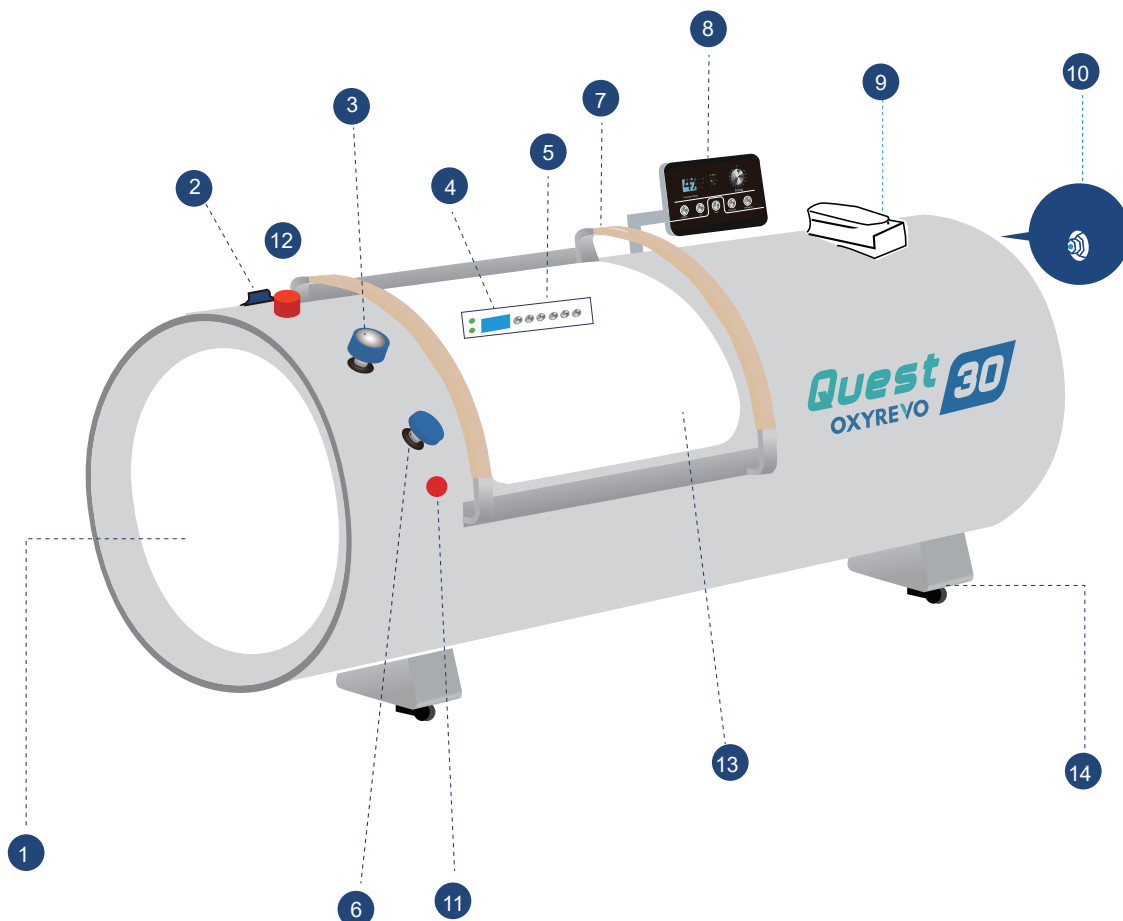
3. After exiting the chamber, turn off power to the unit.

Specifications

1. Chamber Cabin

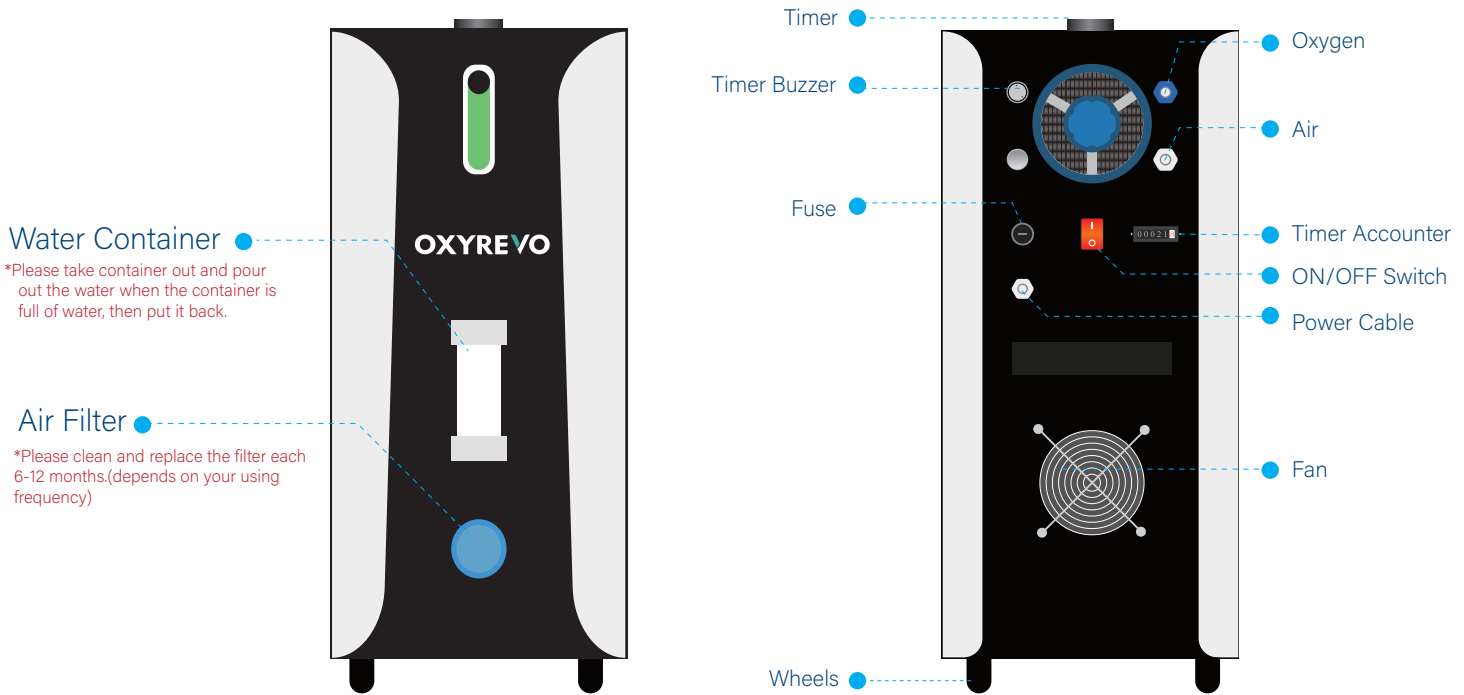
① Window	⑧ External Screen and Contrl Board
② Internal Pressure Gauge	⑨ Phone System
③ External Pressure Gauge	⑩ Automatic Pressure Relief Valves
④ Internal Screen and Contrl Board	⑪ Emergency Pressure Relief Valve
⑤ Control Buttons	⑫ Pressure Switch Valve
⑥ Pressure Deflate Valve	⑬ Chamber Door
⑦ Handle	⑭ Wheels

Model	Hyperbaric Chamber Quest30/36
Specification	
Size	220*75cm/220*90cm
Pressure	1.5ATA(50kPa)/2.0ATA(100kPa)
*Pressure varies depending on the model you order	



Specifications

2. Operating Unit of All-in-one Machine



Voltage	110/220V
Power	1400W
Weight	80KG
Air Flow	85L/110LMinute
Oxygen Flow	10L/Minute

ALL-IN-ONE-MACHINE, INCLUDES,

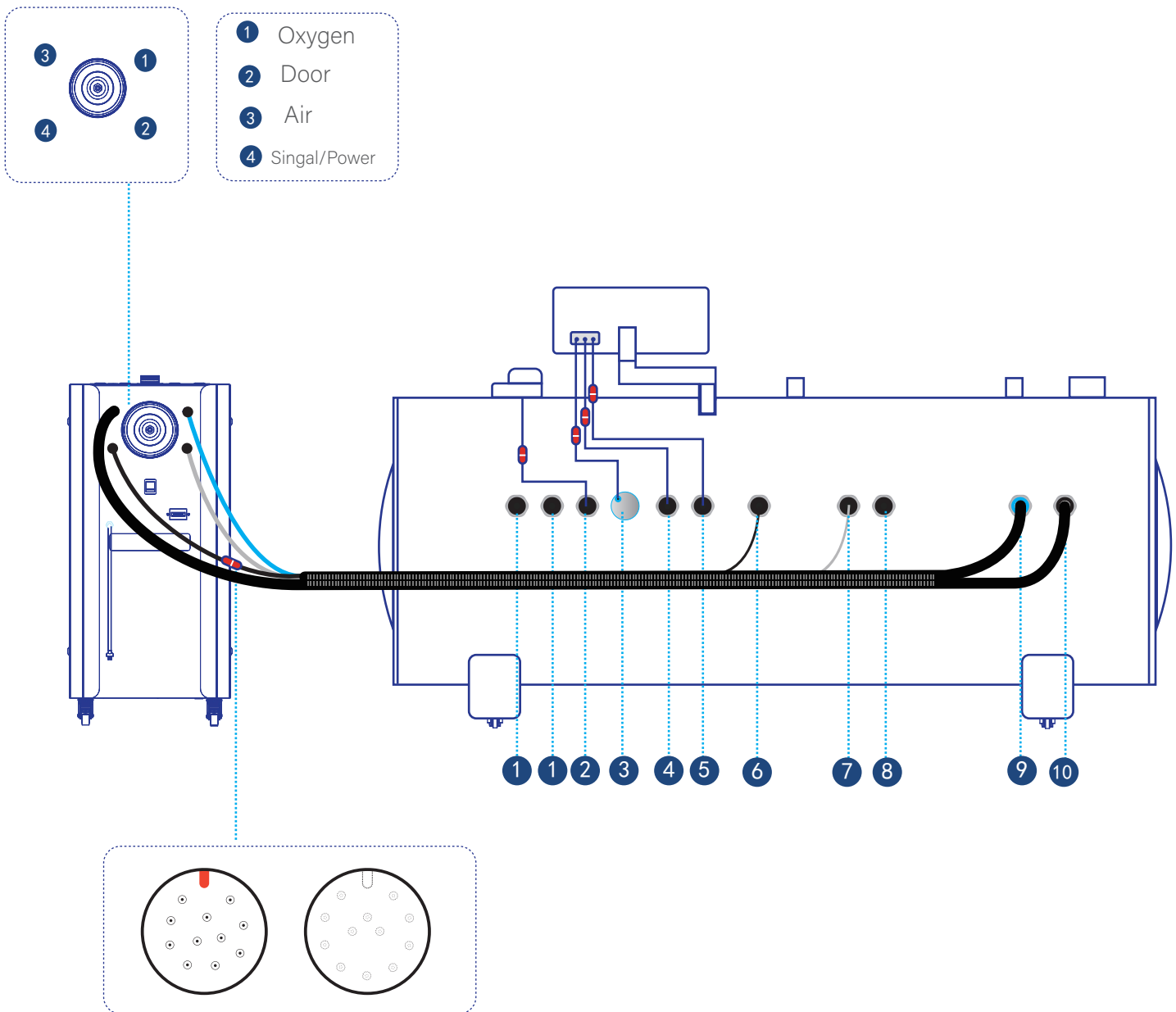
- 1 x Air Compressor
- 1 x Oxygen Concentrator
- 2 x Cooling Machines
- 1 x Anion
- 1 x Air Purifier/Anti-virus System
- 1 x Timer
- 1 x Timer Alarm

Make all function in one combination by one press!

*The timer buzzer will give an alarm after timer time ends when you use timer, please screw the timer button to point to "ON"position to turn off it.

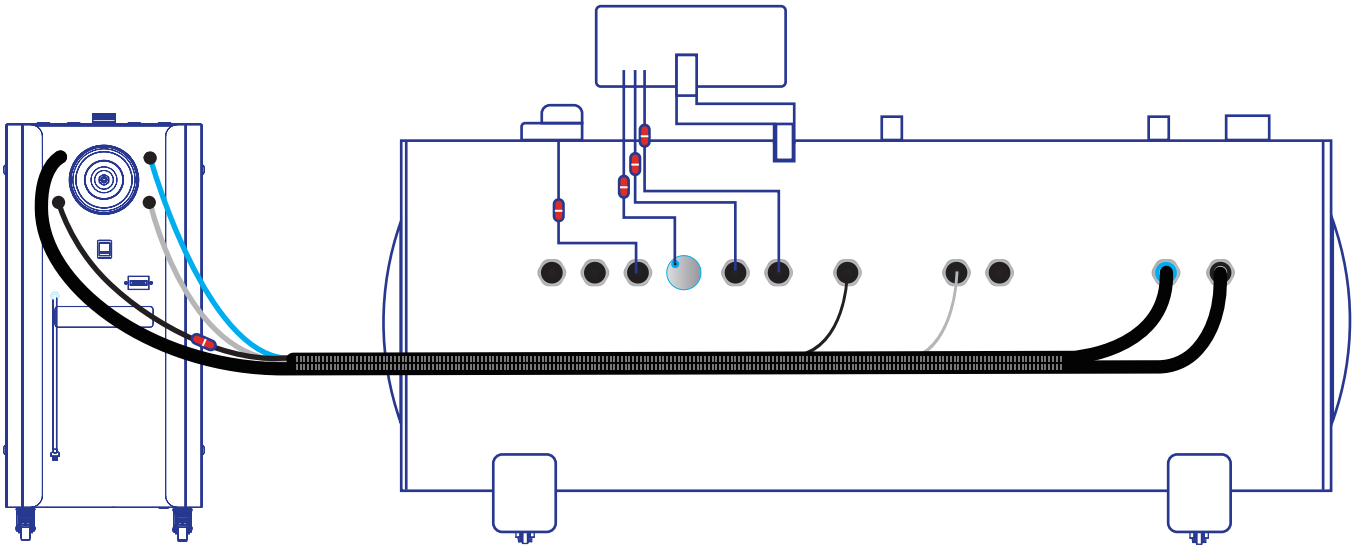
Chamber Tubes and Wires Connection

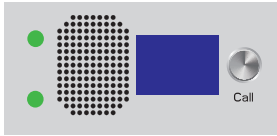

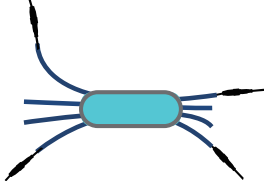

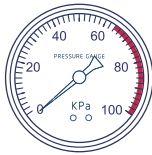
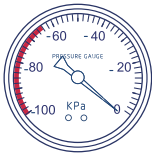



① Automatic Pressure Relief Valve	⑥ Control Panels Supply
② Phone Sytem Power Supply	⑦ Door Tube
③ Sensor Container	⑧ Sensor System Valve
④ Signal Supply	⑨ Oxygen Tube
⑤ Indicator Light Power Supply	⑩ Air Tube



Please be careful about the pins before you connecting the cords!

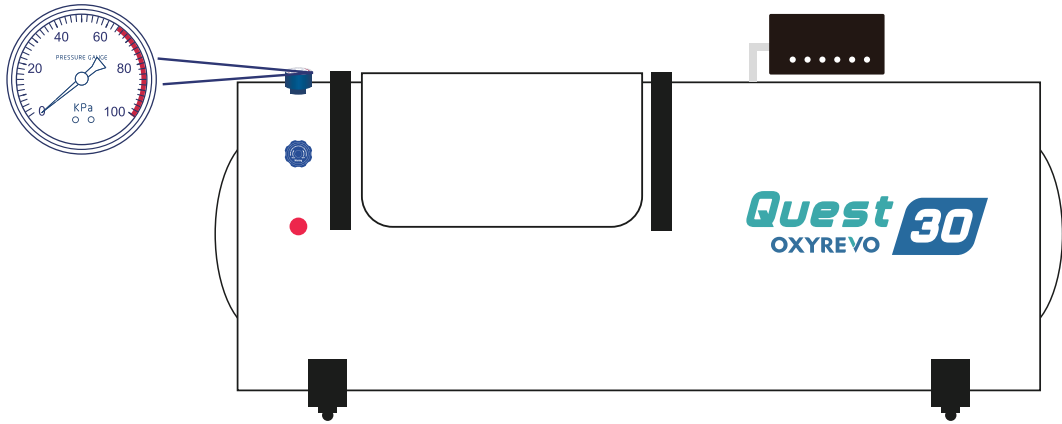
Chamber Tubes and Wires Connection



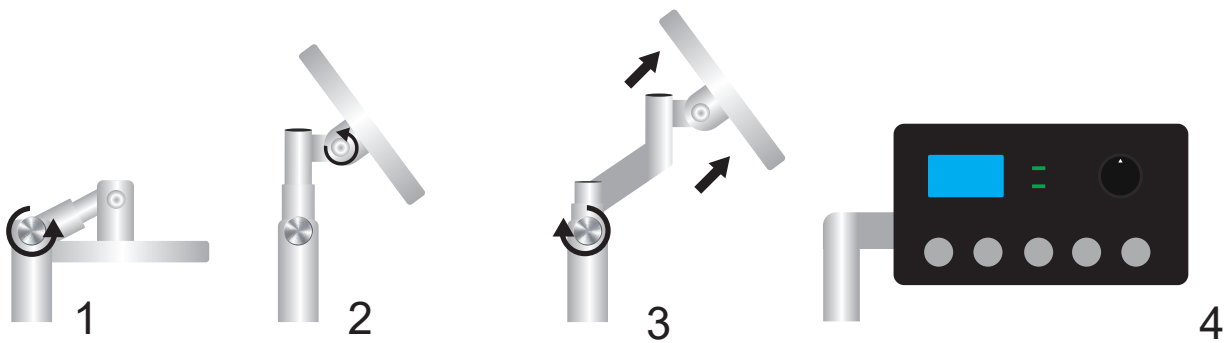
 <p>Phone&Speaker</p>	 <p>Silencer</p>	 <p>Oxygen Mask</p>
 <p>Water Container</p>	 <p>External Pressure Gauge</p>	 <p>Internal Pressure Gauge</p>
 <p>Mattress</p>	 <p>Sensor</p>	 <p>Oxygen Mask</p>

Assembling and Operation

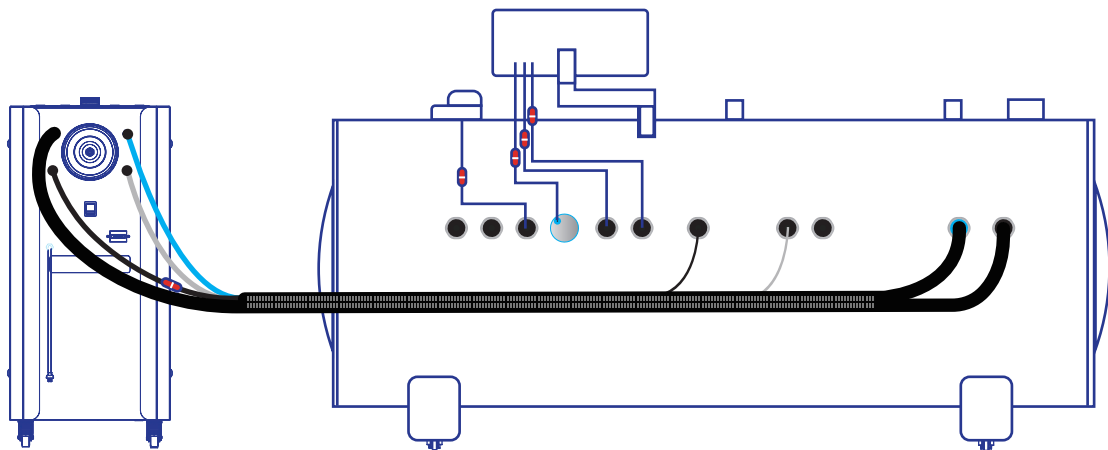
1. Install the External Pressure Gauge(Blue).



2. Unfold the Control Board and Digital Display Screen.

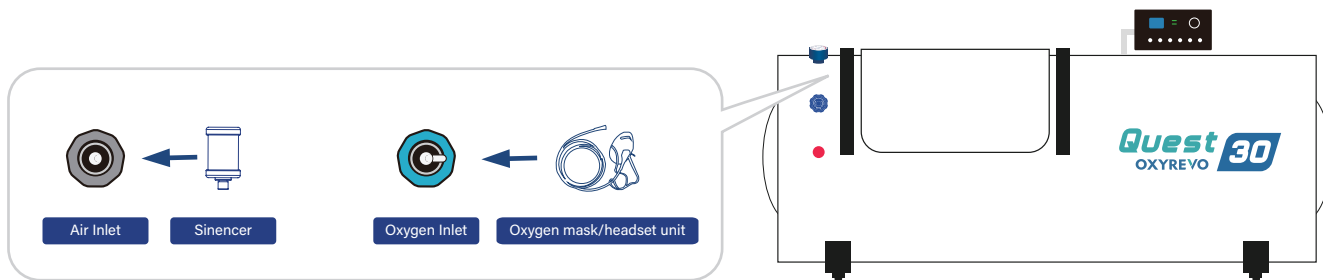


3. Connect all tubes and wires to Chamber and All-in-one machine.

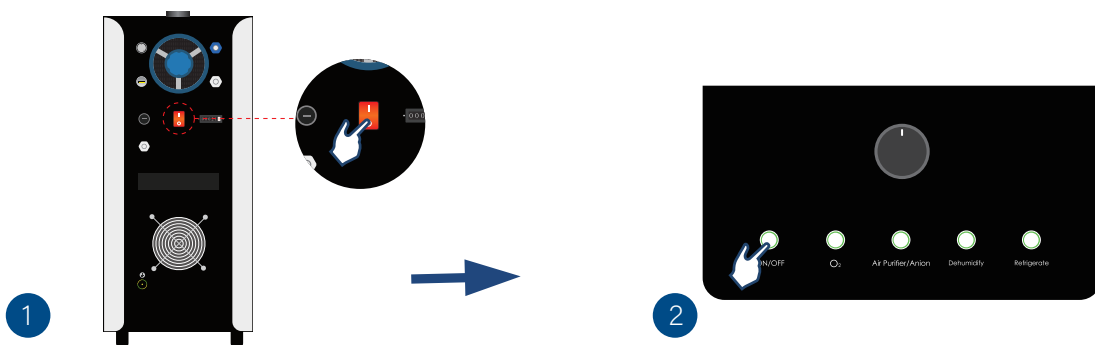


Assembling and Operation

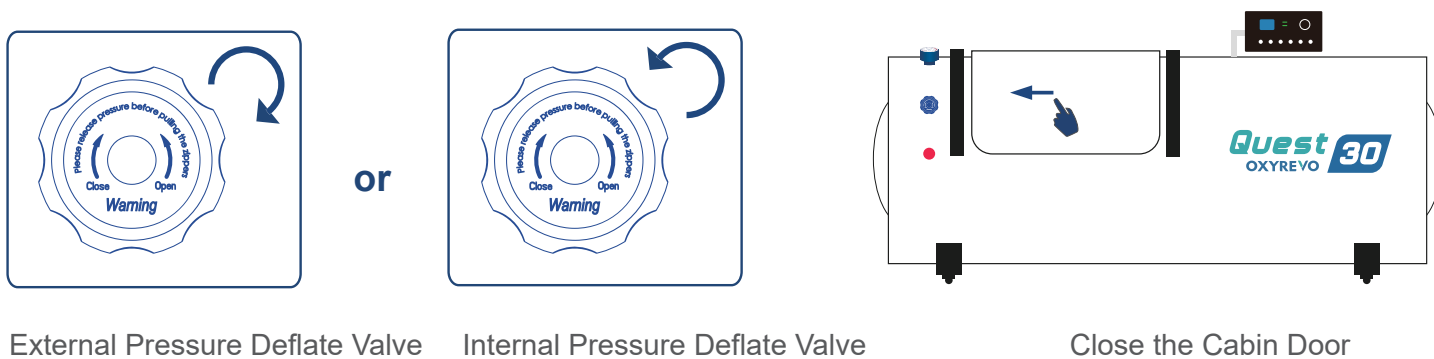
4. Insert the Oxygen Mask to the Oxygen Port inside of chamber.



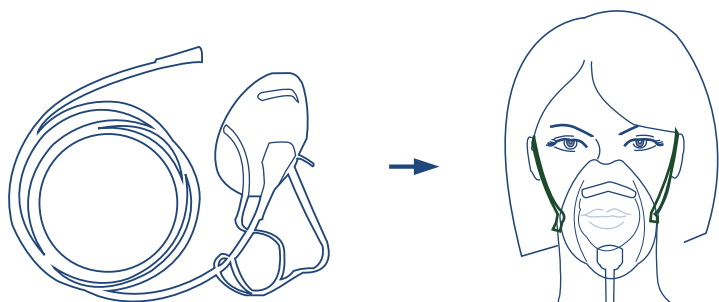
5. Press the power button in All-in-one machine to turn on the power supply.



6. Close the Manual Pressure Deflate Valve and Cabin Door



7. Wear the Oxygen Headset or Oxygen Mask.



Assembling and Operation

8. Press the buttons in External Display and Control Board to start use.

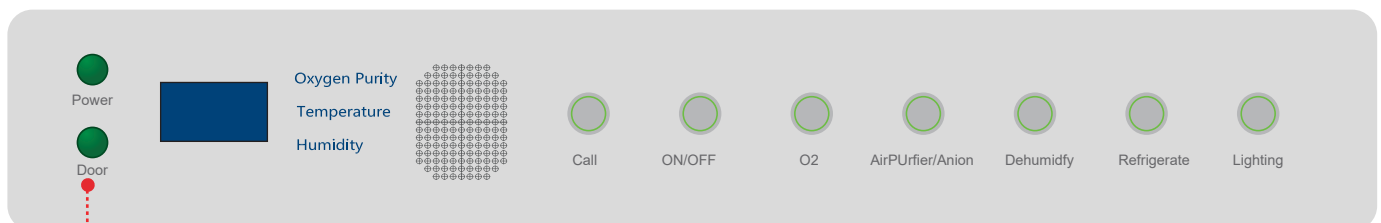
***The indicator pointer of the timer should be at "ON", which means it is normally open. Rotate the timing button to set the timing time you will need or to "OFF" to turn it off.**

(Door indicator lights will be green color inside and outside when door fully closed).



***Buttons only can be operated when Cabin Door fully closed.**

9. You can also operate the chamber via the Internal Display and Control Board.



(Door indicator lights will be green color inside and outside when door fully closed).

Power Indicator Light: Show green color when power is on.

-Door Indicator Light: Shows green color when chamber door is fully closed.

-Call Button: Allows user inside can communicate with outside.

-ON/OFF Button: To control chamber's pressurization and decompression.

-O2 Button: Turn on/off Oxygen supply

-Air Purifier/Anion Button: Turn on/off Anion supply, make the environment more fresh and clean. And the anti-virus air purifier system will remove the bacteria and heavy smell.

Dehumidify Button: Remove moisture.(You can turn on it each time when you use the chamber)

-Refrigerate Button: Cooling and reduce the temperature.(You can turn on it if you feel hot inside when use the chamber)

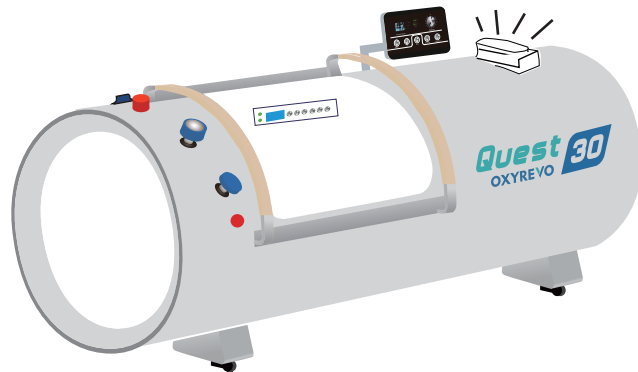
Lighting Button: Turn ON/OFF LED reading light inside chamber.

10. Interphone Communication System:

When people inside want to speak to operator or people outside, he/she can press the Call button, people outside will hear the phone ring, pick up the telephone on the display board, then talk freely.



Interphone(inside)

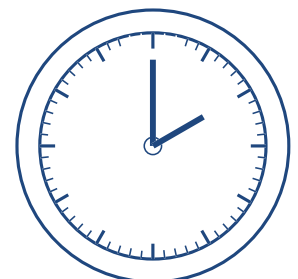
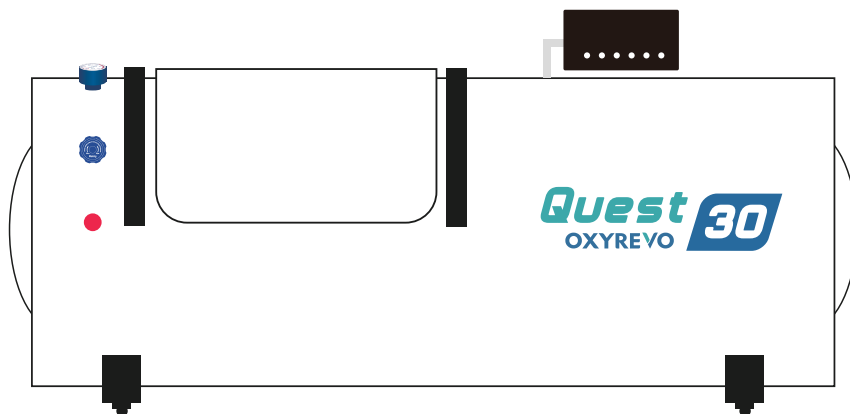


Interphone(outside)

11. Lie down to get the treatment of oxygen therapy.

After about 12 minutes, the Automatic Pressure Relief Valves will work automatically when the pressure reaches to its standard pressure setted down.(50kPa/1.5ATA or 100kPa/2.0ATA).

*Pressure varies depending on the model you order.

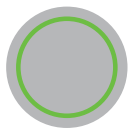


*Treatment Time Suggestion: 60-120Minutes.

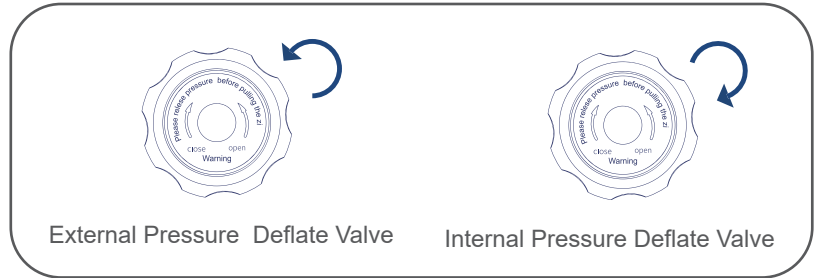
Assembling and Operation

12. When the treatment is finished,

1. Please press the buttons in Internal/External Display and Control Board to turn off the chamber system.
2. Screw the Manual Pressure Deflate Valve to release the pressure.
3. When the pressure in pressure gauge goes down to 0kpa, the cabin door will be dropped. Open the cabin door and get out.

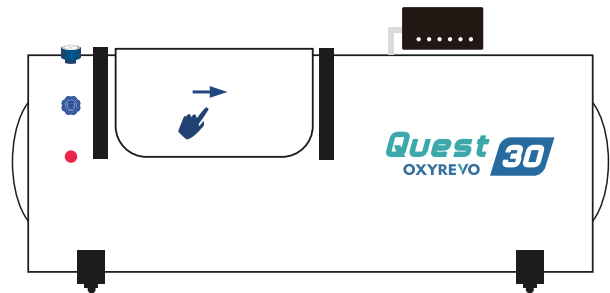
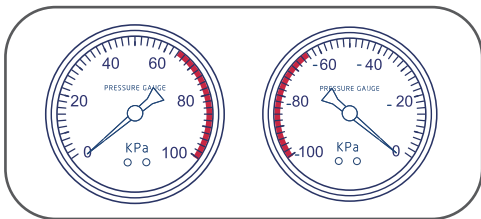


ON/OFF



1. Turn off the machine system

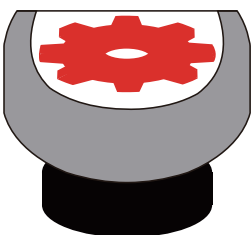
2. Release the pressure



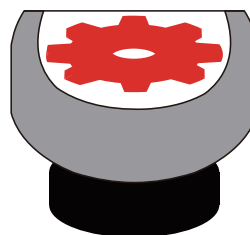
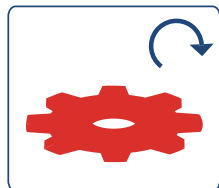
3. After pressure gauge shows 0Kpa

4. The door will drop off then open it to exit.

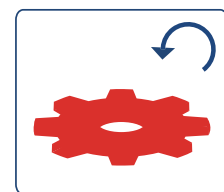
13. When you want to move or transport the chamber tank, please first screw (clockwise) the gears on each wheel to release the wheels, then you can move it freely. When the chamber is settled, please screw (anti-clockwise) the gears back to the holding position.



able to move



unable to move



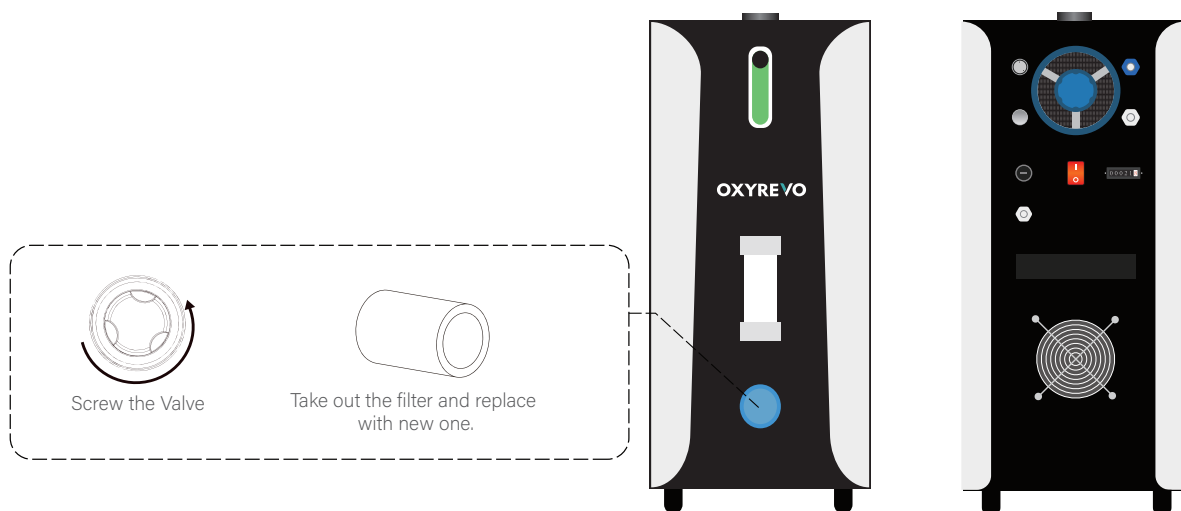
1. Chamber Maintenance and Cleaning

If necessary, clean the inside of the chamber with a damp/antibacterial cloth and run under pressure for 20 minutes until dry.



2. All-in-one Machine Operating Unit Maintenance and Cleaning

- Take off the filter containers and replace the filters. (see below)
- Replace the activated carbon cotton filters every 6-12 months. (depending on frequency of use).



Precautions



When using for the first time, please test the empty chamber first and observe whether the equipment is operating normally. If the equipment is running abnormally, please do not use it, Please contact your dealer promptly.



When you exit the chamber, wait until the pressure gauge shows 0kPa before you open the door. Do not force the door to open during use or when pressure relief is not complete.



In the event of an emergency or if the air deflate valve fails to operate properly, push the emergency relief valve from inside the chamber to relieve pressure. When the pressure is 0, open the door and exit out of chamber.



When you use the device for the first time, there may occur slight discomfort or pain in your ears. This is a normal phenomenon caused by pressure increase. The best way to relieve this is to pinch your nose shut and attempt to blow through your closed mouth.



Please place all the machines away from the wall in an open area for better heating spreading produced when machines running.

1. Clothing

- Wear the loose, comfortable clothes.
- You may bring electronic products/drinks into the chamber.
- Ladies should remove long socks (stockings). Please take off shoes before getting in.
- Shoes, jewelry, or any sharp objects that could damage the chamber should be removed.
- Disposable foot and hair covers may be used.
- To make the therapy experience more pleasant, you should get as comfortable as possible - that means taking care of restroom breaks and/or drinking water before getting into the chamber.
- The user should be advised to relax and breathe normally.

2. Chamber Pressurization

During the pressurization, some people may feel pain in the ears due to pressure on the tympanic membrane. This is normal and easily relieved. Chewing (gum) or repeated swallowing often equalizes this pressure. You can also pinch the nose shut and blow through closed mouth (as divers do). However, if the Eustachian tubes are blocked (due to a cold or allergy), the pressure cannot be equalized, and the user should terminate the session. The user can also slow the pressurization process by using the internal deflation pressure valve. When a session is finished, unscrew the air deflate valve to depressurize the chamber - the pressure will drop slowly from standard pressure to 0kPa - this depressurization process should take about 5-10 minutes. When the pressure gauges appear 0kPa, door can be opened, people can get out, and machines turned off.

Warranty

All products come with 2 years of warranty from the date of delivery. During the warranty period, if there are any faulty materials and/or workmanship on the system (when properly operated), repair or replacement will be offered.



OXYREVO

Hyperbaric Chamber

"Revolutionize Yourself Through Oxygen"

THANK YOU!

Website: www.oxyrevo.com

Email: info@oxyrevo.com